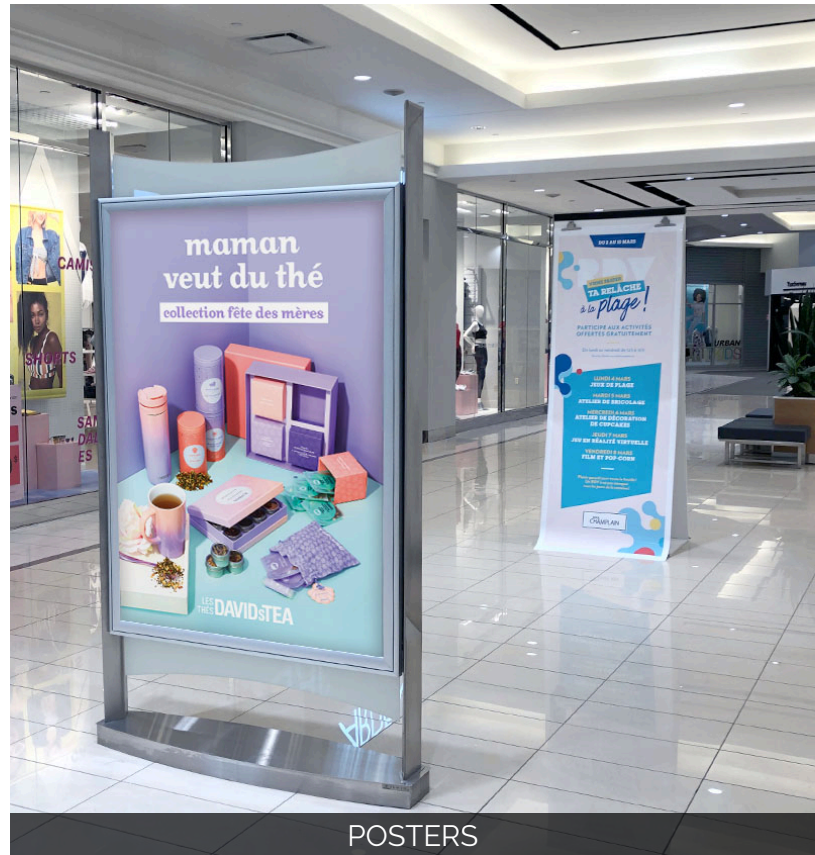


MAIL CHAMPLAIN

Brossard, Quebec



DIGITAL DISPLAYS



POSTERS

With its contemporary design, Mail Champlain and its 726,000 square foot leasable area offer an environment that highlights a range of prestigious retailers. Located in Brossard, the thirteenth largest city in Quebec, the centre benefits from an ideal location, in a growing market where the population amounts to some 660,847 people within its trade area. It is located close to the access to busy roads and highways on which daily average car circulation is 200,000, close to a bus terminal and the Champlain Bridge that connects the area to downtown Montréal.



GENERAL INFORMATION

Annual traffic	4,366,731
Number of stores	150
Gross area	726,000 ft ²
Time spent per visit	66.4 minutes
Number of visits per month	5.0
Average purchase during a visit	\$ 68.80
Market population	660,847
Average household income	\$ 72,414

Source : The centres / Monday Report

PRODUCTS

Digital Displays
Specialty Media
Banners
Posters

2151 Boulevard Lapinière Brossard,
QC, Canada, J4W 2T5

mailchamplain.ca



100+ SHOPPING MALLS
In 8 provinces

660+ HD SCREENS
Across Canada

700+ POSTERS & BANNERS
From coast to coast

Toll free 1-877-987-2334
www.neo-ooh.com